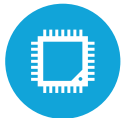




HIGHLIGHTS



Projected Capacitive Touch Screen



Intel® Celeron® Quad Core J1900



Up to 8GB RAM



IP64 Water and Dust Proof Front Panel Protection



Multiple Peripheral Options

SPECIFICATIONS

PROCESSING

CPU: Intel® Celeron Quad Core J1900 2.0Ghz, up to 2.42 Ghz

System Memory: 1x DDR3-LV SODIMM 4GB (up to 8GB Optional)

LCD PANEL

LCD Size: 15"

LCD Type: LED LCD

Brightness: 300 nits

Maximum Resolution: 1024 x 768

Touch Screen Type: Projected Capacitive (USB Interface)

Tilt Angle: 0° ~ 140°

Screen: Bezel-less True Flat

STORAGE

Solid State Drive: Standard 128 GB SSD

POWER

Power Supply: 60W +19V lockable 3 Pin power adapter

EMC & Safety: FCC / CE Class A, LVD

Operating Temperature: 32°F to 95°F (0° to 40°C)

DIMENSIONS

15" with base; 13.3" H x 14.3" W x 9" D (with MSR)

I/O PORTS

USB: 3x 2.0, 1x 3.0, 1x 2.0 on side of unit

Powered COM (RS232): x2 (DB9 Power COM RI/5V/12V)

Selected by Jumper

Gigabit LAN (10/100/1000): x1

Cash Drawer Port: x1 RJ11 (12V / 24V)

Power Button: x1

VGA: x1 (DB15)

Audio: 3.5mm Jack audio out (Does not include speakers)

OPTIONAL PERIPHERALS

MSR USB: Encrypted Option Available

Customer Display: 2 x 20 VFD

Scanner: 2D Barcode Scanner

Pin Pad Mount

VESA/Wallmountable

OS SUPPORT

POSREADY 7 (64 bit), Windows 10 IOT & Pro (64 bit), Linux



KEY FEATURES

1	15 LED LCD Projected Capacitive Display
2	Sleek Design
3	Multiple Base Options
4	Multiple Ports including USB, VGA and Powered COM