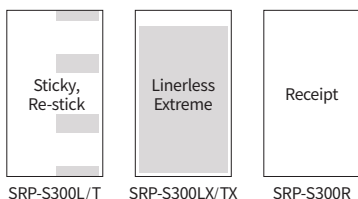
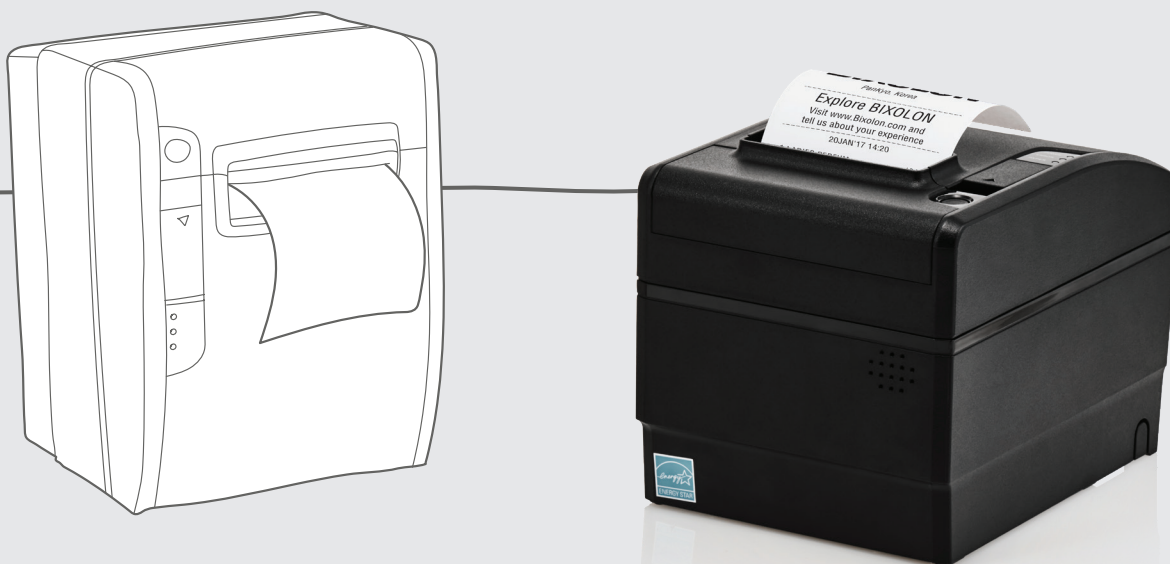


SRP-S300

3 inch Linerless Label Printer



Higher Performance and Lower TCO



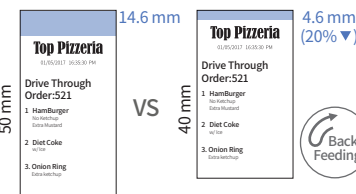
Multiple Media Choices

- Supports sticky, re-stick and linerless extreme label printing (Equipped with rubber platen rollers)
- Standard receipt printing
- 83 / 80 / 62 / 58 / 40 mm media width supported



Exceptional Technology

- A water-resistant cover protects the main-board from water and moisture (IP21 certified)
- Optional taken sensor : Label will not continue to print until current label is removed to prevent jamming
- Built-in B-Melodist
 - Voice error message
 - One-time or continuous alarm for order notification
- SRP-S300H: Supports various USB peripherals, MRD web & cloud based printing



Lower TCO

- World's first linerless label printer equipped with specialized back-feed technology
- Anti-jam technology is provided by special paper path design and automatic guillotine cutting system
- Paper saving mode reduces the length of a receipt up to 25%
- Easy to replace auto-cutter is included



SRP-S300

3 inch Linerless Label Printer

Specifications

Print Characteristics

Print Method

Direct Thermal

Print Speed

SRP-S300L / LX: Up to 170 mm/sec
SRP-S300R: Up to 300 mm/sec

Print Resolution

203 dpi

Print Width

Up to 80 / 72 / 60 / 48 / 32 mm

Sensor

Paper End, Black Mark, Cover Open,
Paper Taken(Optional),
Paper Near End(Receipt Only)

Media Characteristics

Media Type

SRP-S300L: Sticky, Re-stick
SRP-S300LX: Linerless Extreme
SRP-S300R: Receipt

Media Width

83 / 80 / 62 / 58 / 40 mm

Media Roll Diameter

Up to 103 mm

Media Thickness

0.06 ~ 0.09 mm

Supply Method

Easy Paper Loading

Physical Characteristics

Dimensions (W x D x H)

156 x 210 x 160 mm
(6.14 x 8.27 x 6.30 inch)

Weight

2.00 kg (4.40 lbs.)

Electrical

Energy Star Certified,
External Power Supply Housed Internally
(Adaptor 24V/2.5A)

Drawer Port

2 Ports (Via y-type adaptor)

Performance Characteristics

NV Image Memory

256 Kbytes (Mono)

Receive Buffer

4 Kbytes

User Define Buffer

12 Kbytes

Interface

Standard: USB V2.0 FS

Optional: USB V2.0 FS + Serial / Parallel / Ethernet
/ WLAN¹ / Bluetooth² / Powered USB

SRP-S300Hi (B-gate Hub Interface)

3 USB Host ports(V2.0 HS) + 1 Device port (V2.0 HS)
+ 1 USB Host with charging + Ethernet + WLAN³

WLAN¹: 802.11a/b/g/n(2.4G+5G)

Bluetooth²: V4.2 Classic / LE, Class 1, MFi certified

WLAN³: 802.11a/ac/b/g/n(2.4G+5G) USB dongle
type(Optional)

Environment Characteristics

Temperature

Operating: 0 ~ 40°C (32 ~ 104°F)

Storage: -20 ~ 60°C (-4 ~ 140°F)

Humidity

Operating: 10 ~ 80% RH

Storage: 10 ~ 90% RH

Reliability**Thermal Print Head (TPH)**

SRP-S300L / LX: 75 Km

SRP-S300R: 150 Km

Auto Cutter

SRP-S300L: 1 Million Cuts

SRP-S300R: 3 Million Cuts

*This printer shall be used with BIXOLON-certified
linerless media for quality assurance or required
to achieve a new certification.

Software

Emulation

BXL / POS

Driver / Utility

Windows Driver, OPOS / JPOS Driver,
Linux / Mac CUPS Driver,
Virtual COM USB / Ethernet Driver, Utility Program
SRP-S300Hi: Utility Program

SDK / Plugin

Android / iOS / Windows SDK, Linux SDK,
Xamarin SDK, Chrome SDK, Cordova Plugin

SRP-S300Hi: B-gate iOS / Android / Windows SDK,
Chrome SDK, B-gate SDK_Cloud,
Server Print,
B-gate SDK_Web App Print

Application

mPrint App (iOS), mPrint Server (Windows, iOS)

MDM

BIXOLON Profile Manager
- XPM™, XCM™ (Windows, Android)

Fonts / Graphics / Symbologies

Character Size

Font A: 12 x 24 Font B: 9 x 17 Font C: 9 x 24
KOR, CHN, JPN: 24 x 24

Characters Per Line

Font A: 48 Font B, C: 64

Character Sets

Alphanumeric: 95
Extended Graphics: 128 x 33 page
International: 32

Graphics

Supporting User-Defined Fonts, Graphics,
Formats, and Logos

Barcode Symbologies

1D: Coda Bar, Code 39, Code 93, Code 128,
EAN-8, EAN-13, ITF, UPC-A, UPC-E
2D: Data Matrix, PDF417, QR code

Accessories

Standard

2 inch Partition (62 / 58 / 40 mm),
3 inch Partition (83 mm)

Optional

External buzzer, B-Melodist, USB A-B Cable 1.8m,
USB to Serial cable, WLAN Dongle,
Powered USB 0.5m, Powered USB 1.2m

Supplies

B-linerless™: BIXOLON's flexible and ecological
linerless label consumables



BR_SRP-S300_EN_FEB20_V1

Copyright © BIXOLON Co., Ltd. All rights reserved. Features and specifications are subject to change without prior notice.

BIXOLON

BIXOLON Co., Ltd.
+82 (0) 31 218 5500
sales@bixolon.com

BIXOLON America Inc.
+1 858 764 4580
sales@bixolonusa.com

BIXOLON Europe GmbH
+49 211 68 78 54 0
sales@bixolon.de

www.Bixolon.com