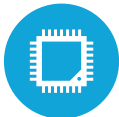




HIGHLIGHTS



Intel® Celeron® Elkhart Lake CPU



0/2x HDBaseT Outputs



2x HDMI Outputs (Optional 3rd)



Supports up to 3 Displays Simultaneously



Supports HDMI-CEC & EDID Emulation



Up to 300FT Transmission with HDBaseT

SPECIFICATIONS

MOTHERBOARD

Processors:

Intel® Celeron® Elkhart Lake J6412 2.0GHz up to 2.6 GHz

System Memory: x1 DDR4 Slot (up to 32GB)

Graphic Engine: Intel® 10th UHD

STORAGE

Solid State Drive: Standard 128 GB m.2 SSD (SATA and NVMe Support)

EXTERNAL I/O PORTS

Front Side:

2x USB x2.0 (Type A)

Rear Side:

4x USB 3.0 (Type A)

2x HDMI (3rd Optional)

0/2x HDBaseT

2x LAN PoE Support (Optional)

1x Com

1x Line-out

1x Mic In

EXPANSION

Wireless 802.11 LAN (Optional)

OPTIONAL PERIPHERALS

VESA Wall mount/Wall mount kit 75 & 100 Supported

TECHNICAL SPECS

Dimensions: 10.6"(W) x 5.7" (H) x 1.6"(D)

Weight: 5LBS

Operating Temperature: 32°F ~ 95°F

Storage Temperature: (-20) ~ 60°C / (-4) ~ 140°F

Humidity: 20% ~ 85% noncondensing

POWER

65W/19V

OS SUPPORT

Win 11 Pro, Win10 IOT Enterprise, Linux

