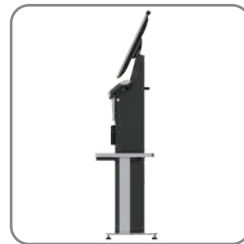


Alfred

AD-215-S / 156-S

Self-Checkout Kiosk



FEATURES

- 15.6"/ 21.5" full HD display. Use in landscape or portrait mode.
- Integrated 3-inch thermal printer & area imager 2D scanner.
- High-speed M.2 SSD for maximum performance and reliability
- Available for Windows, Linux Ubuntu and Android
- Ethernet, Wi-Fi (option) and BT (option) connectivity
- ADA keypad



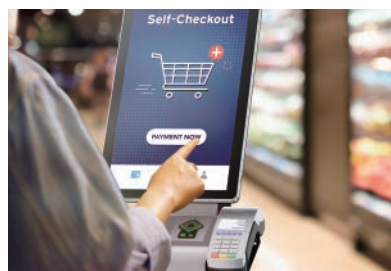
Alfred

Product configuration



Durable Bagging Area

110 lb/ 50 kg weight capacity on each side



Specifications



Item	AD-215-S (Windows/Linux)		AD-156-S (Windows/Linux)
Display	21.5", 16:9, 1920 x 1080, 300 nits		15.6", 16:9, 1366 x 768, 220 nits 15.6", 16:9, 1920 x 1080, 400 nits (option)
Touch	PCAP touch		
CPU	Alder Lake-P Intel® Celeron® 7305 Intel® Core™ i3-1215U Intel® Core™ i5-1245U, vPro Intel® Core™ i7-1265U, vPro	Elkhart Lake Intel® Celeron® J6412	Kaby Lake-U Intel® Core™ i3-7100U Intel® Core™ i5-7300U
Memory	DDR4 4GB, 8GB, 16GB, 32GB		
Storage	M.2 PCIe SSD: 128GB / 256GB / 512GB		
I/O Ports	3 x serial ports, RS-232 (RJ45), 0V/5V/12V selected in BIOS (COM1, COM2, COM3)		2 x serial ports, RS-232 (RJ45), 0V/5V/12V selected in BIOS (COM1, COM2)
	1 x Intel LAN (IEEE 802.3 10/100/1000 Mbps)	1 x LAN (IEEE 802.3 10/100/1000 Mbps)	2 x LAN (IEEE 802.3 10/100/1000 Mbps)
	4 x USB 3.2 + 2 x USB 2.0	3 x USB 3.2 + 3 x USB 2.0	4 x USB 3.0
	1 x Type-C (data transfer + display)		1 x VGA
	1 x RJ11 port support for 2 cash drawers with 24V / 12V by jumper setting		
	1 x DC +12V output		
	1 x DC +12V input		
	1 x audio (1 x line-out)		
	1 x HDMI		
	Speaker	1 x speaker (3W)	
Printer	3" thermal printer		
Barcode Scanner	Area imager 2D scanner		
Bagging Table Capacity	110 lb or 50 kg / each		
Peripheral Options	MSR, EMV terminal brackets, 5MP camera, RFID / NFC reader, ADA keypad LED status indicator (multi-color light bar) Wheels kit: two wheels & one handle		
Wi-Fi / BT (option)	Wi-Fi 6E Intel AX210, IEEE 802.11 a/b/g/n/acR2/axR2, BT 5.2		
Operating System	1. Windows 11 IoT Enterprise GAC (64bit) ready 2. Windows 10 IoT Enterprise LTSC 21H2 (64bit) 3. Linux Ubuntu 22.04		1. Windows 10 IoT Enterprise LTSC 21H2 (64bit) 2. Linux Ubuntu 18.04
	TPM & vPro	1. Intel vPro (i5/i7 CPU only) 2. S/W TPM 2.0 (BIOS)	S/W TPM 2.0 (BIOS) 1. Intel vPro (i5 CPU only) 2. S/W TPM 2.0 (BIOS)
Power Adaptor	AC-In 100~240V / DC-Out 12V, 120W		AC-In 100~240V / DC-Out 12V, 90W
Reliability	System operating temperature: 0~40°C / 32~104°F		
	System humidity: 15% ~ 80%		
	Storage temperature: -20~60°C / -4~140°		
Dimensions (W x Hx D)	Landscape : 985 x 1601 x 471 mm / 38.8 x 63.1 x 16.4 in		Landscape : 985 x 1509 x 471 mm / 38.8 x 59.4 x 16.4 in
	Portrait : 985 x 1670 x 471 mm / 38.8 x 65.7 x 16.4 in		Portrait : 985 x 1596 x 471 mm / 38.8 x 62.8 x 16.4 in

*Specification is subject to change without prior notice

Specifications



Item	AD-215-S (Android)	AD-156-S (Android)
Display	21.5", 16:9, 1920 x 1080, 300 nits	15.6", 16:9, 1366 x 768, 220 nits 15.6", 16:9, 1920 x 1080, 400 nits (option)
Touch	PCAP touch	
CPU	Rockchip RK3399	
Memory	LDDR4 4GB	
Storage	eMMC 32GB + 1x micro SD card slot (up to 128GB)	
I/O Ports	2 x serial ports, RS-232 (RJ45), 0V/5V/12V selected in setting (COM1, COM2)	
	1 x LAN (IEEE 802.3 10/100/1000 Mbps)	
	1 x RJ11 port supports 2 cash drawer with 24V/12V by jumper setting	
	1 x DC + 12V output	
	1 x USB 3.0 (OTG) + 5 x USB 2.0	
	1 x DC +12V input	
	1 x audio (1 x line-out)	
	1 x HDMI	
	1 x micro SD card	
Speaker	1 x speaker (3W)	
Printer	3" thermal printer	
Barcode Scanner	Area imager 2D scanner	
Bagging Table Capacity	110 lb or 50 kg/each	
Peripheral Options	MSR, EMV terminal brackets, 5MP camera, RFID/NFC reader, ADA keypad LED status indicator (multi-color light bar) Wheels kit: two wheels & one handle	
Wi-Fi / BT (option)	2.4GHz/5GHz (IEEE 802.11a/b/g/n/ac), BT 4.2 (supports BLE)	
Operating System	Android 11	
Power Adaptor	AC-In 100~240V / DC-Out 12V, 90W	AC-In 100~240V / DC-Out 12V, 65W
Reliability	System operating temperature: 0~40°C / 32~104°F System humidity: 15% ~ 80% Storage temperature: -20~60°C / -4~140°F	
Dimensions (W x H x D)	Landscape : 985 x 1601 x 471 mm / 38.8 x 63.1 x 16.4 in Portrait : 985 x 1670 x 471 mm / 38.8 x 65.7 x 16.4 in	Landscape : 985 x 1509 x 471 mm / 38.8 x 59.4 x 16.4 in Portrait : 985 x 1596 x 471 mm / 38.8 x 62.8 x 16.4 in

*Specification is subject to change without prior notice

Contact US

Partner Tech USA Inc.
1255 N. Patt Street
Anaheim, CA 92801
Phone: 949-598-1888
sales@partnertechcorp.com

Partner Tech Mexico & Latin America
Blvd. Palmas Hills 1, Piso 8, Valle de las Palmas, Huixquilucan
Ciudad de México, 52764, Mexico
Phone: 949-598-1888
info@partnertechcorp.com

