



Pavilion Kiosk

COFFEE WE TRUST



Application Benefits

- Multiple Configurations Available
- Payment Methods Integrated
- Enhance Customers' Experience
- Minimum Wobble Guaranteed
- Easy Serviceability and Upgradability
- Kiosk Solution for Contactless Payments



2.32 Inches

System Thickness

0.7 Inches

Touch Bezel Width

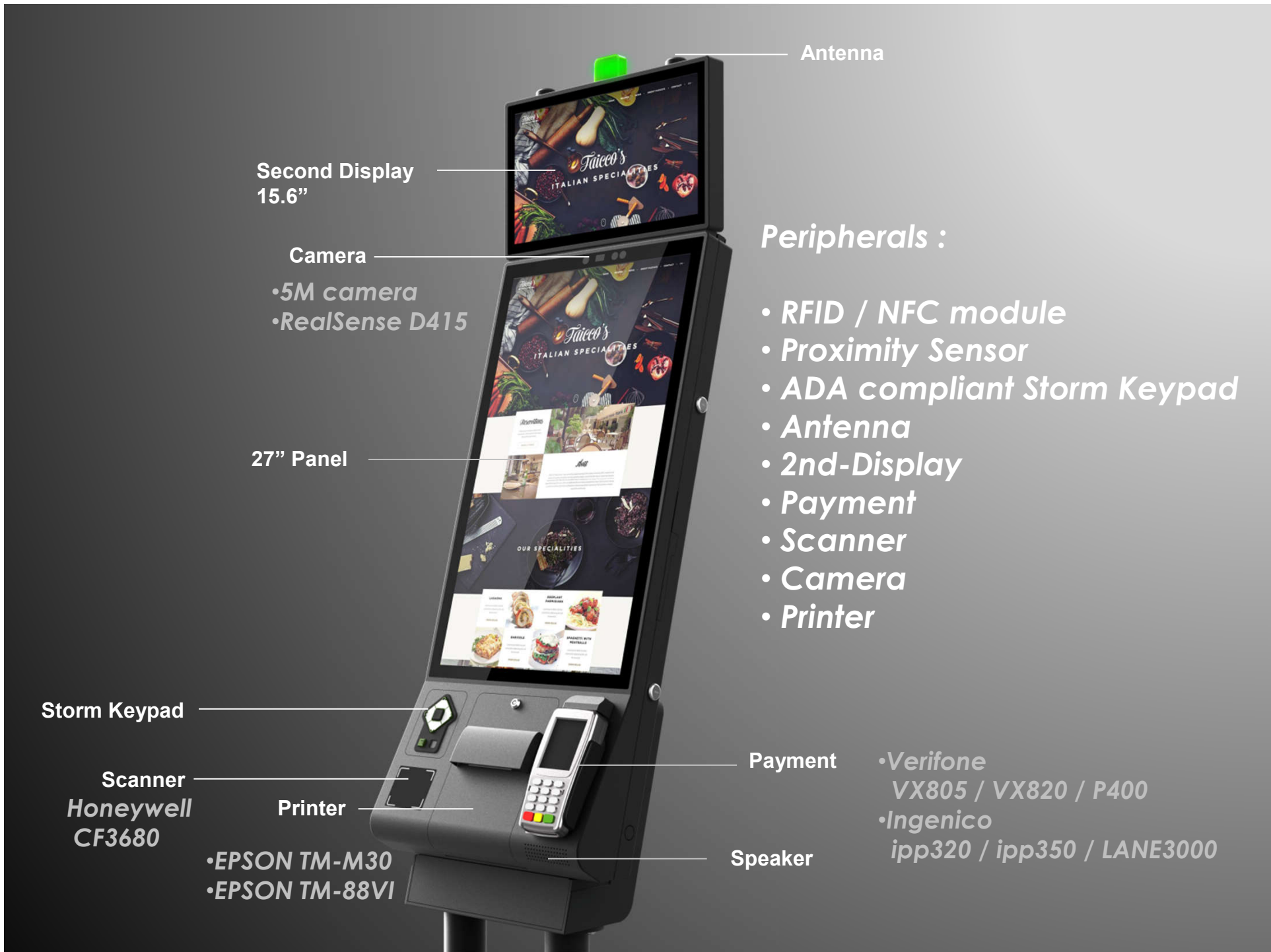


Self-Service
KIOSK 27"

30°

15°

0°



Antenna

Second Display
15.6"

Camera
•5M camera
•RealSense D415

27" Panel

Storm Keypad

Scanner
Honeywell
CF3680

Printer
•EPSON TM-M30
•EPSON TM-88VI

Payment

•Verifone
VX805 / VX820 / P400
•Ingenico
ipp320 / ipp350 / LANE3000

Speaker

Peripherals :

- RFID / NFC module
- Proximity Sensor
- ADA compliant Storm Keypad
- Antenna
- 2nd-Display
- Payment
- Scanner
- Camera
- Printer



*EPSON
TM-88VI*

*EPSON
TM-M30*

Printer Solution

- *EPSON_TM-88VI*
- *EPSON_TM-M30*



Dummy
Cover

RFID

Storm Keypad

- Storm Keypad
- RFID
- Dummy Solution

Payment Solution

- VERIFONE : VX820
- INGENICO : IPP350
- VERIFONE : P400

- VERIFONE : VX805
- INGENICO : IPP320
- INGENICO : LANE-3000



VERIFONE
VX820



INGENICO
IPP350



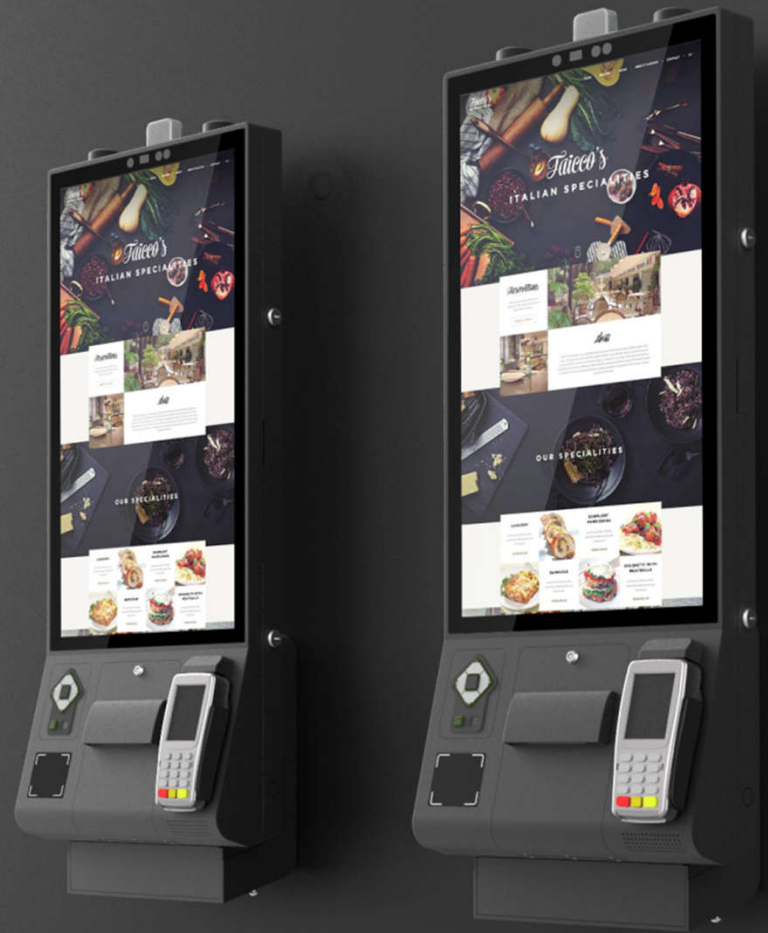
VERIFONE
P400

Second Display Solution

Second Display
15.6"



Wall Mount Solution





Counter Mount Solution

Counter Plate



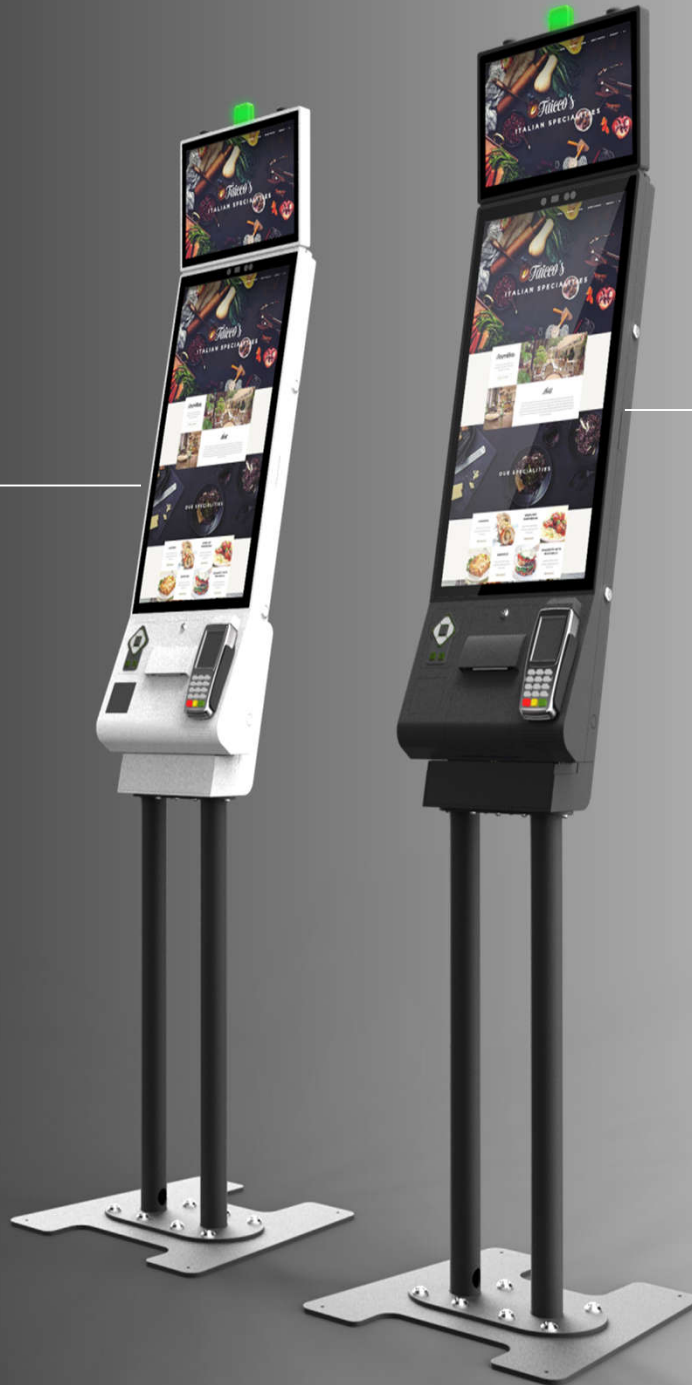
Stand

Plate

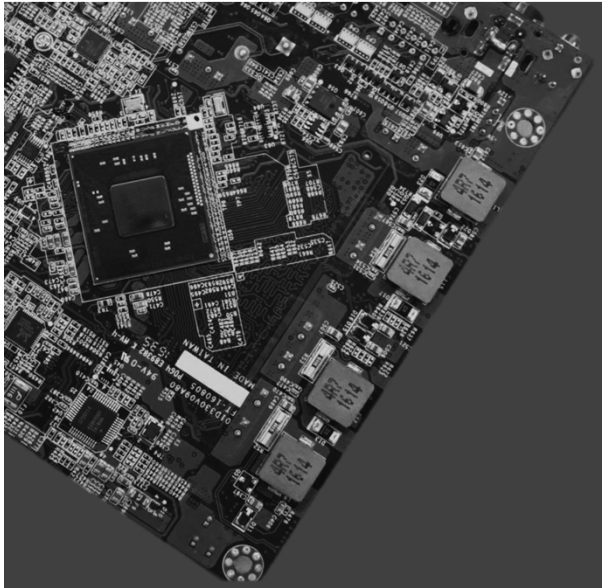
Stand & Plate
Solution

Color Plan

**Option
(White Color)**



**Standard
(Black Color)**



System	Motherboard Processor Memory Storage	Intel Whiskey Lake Intel Whiskey Lake U i3 8145UE 2.2GHz 1x DDR4 2133MHz SO-DIMM up to 16GB 2x M.2 (M-key) NVMe or M.2 SATA SSD module
LCD Touch Panel	LCD Size Brightness Resolution Touch Screen Aspect Ration	27" 300 nits 1920 x 1080 (Full HD) True-Flat PCAP Multi-Touch 9:16
Expansion	M. 2 (E-key)	1x M.2 (E-key) WiFi/BT module (option)
External I/O Ports	USB Serial Port LAN Cash Drawer FeDP DC Jack	2x USB3.0 Type C, 2x USB3.0, 2x USB2.0 2x DB9 (Powered RS232) (default 0V; COM1 5V, COM2 12V) 1x RJ45 1x RJ11 2 (Proprietary) 1 4PIN DIN (with latch)
Audio	Speaker	1x 2W
Power	Power Adapter	65W / 19V
Communication	Wireless LAN	802.11 b/g/n/ac & BT4.0 WLAN Card (Option)
Certificate	EMC & Safety	FCC Class A, CE Mark, LVD
Environment	Operating Temperature Storage Temperature Humidity	0 °C ~ 35 °C (32 °F ~ 95 °F) -20 °C ~ 60 °C (14 °F ~ 140 °F) 20% ~ 90% RH non-condensing
Mounting		Counter & Wall Mount
Weight		57.3 lbs
OS Supported		Windows 10 IoT Enterprise & Professional (64bit), Linux