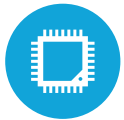




HIGHLIGHTS



Projected Capacitive Touch Screen



Intel® Tiger Lake and Elkhart Lake CPU's Available



Up to 32GB DDR4



15.6" Widescreen LCD with Slim Bezel



Supports Windows 11 Pro

SPECIFICATIONS

PROCESSING

CPU: Intel® Elkhart Lake J6412 up to 2.6Ghz
Intel® Tiger Lake i3-8145U Turbo Frequency up to 3.9Ghz
System Memory: 1x DDR4-SODIMM 4GB (up to 32GB)

LCD PANEL

LCD Size: 15.6"
LCD Backlight type: LED
Brightness: 300 nits
Maximum Resolution: 1920 x 1080
Touch Screen Type: Projected Capacitive
Screen: Bezel-less True Flat

STORAGE

Tiger Lake: 128 GB NVMe SSD, 2 SSD's supported
Elkhart Lake: 128 GB NVMe, 1SSD Supported
*Other sizes available for both CPU's

DIMENSIONS

14.5" W x 12.1" H x 9.0" D (With Base)

ENVIRONMENTAL

EMC & Safety: FCC / CE Class A, LVD
Operating Temperature: 41°F ~ 95°F (0°C ~ 35°C)

POWER

Power Supply: 120W+19V (Tiger Lake)
65W+19V for or 120W with Powered USB (Elkhart Lake)

I/O PORTS

USB: 2x USB Type C (1 port includes video alternate mode) 2x USB 3.0, 2x USB 2.0 (Tiger Lake)
USB: 2x USB 3.0 -Type C, 2x USB 3.0, 2x USB 2.0 (Elkhart Lake)
2nd Video: proprietary miniDP video port (not compatible with regular miniDP)
Serial: 2xDB9 (Powered RS232)
Gigabit LAN: 1xRJ45
Cash Drawer Port: 1 RJ11
DC Jack: 1x4PIN DIN (with latch)
+12V/+24V Powered USB (Elkhart and Tiger Lake, optional)

OPTIONAL PERIPHERALS

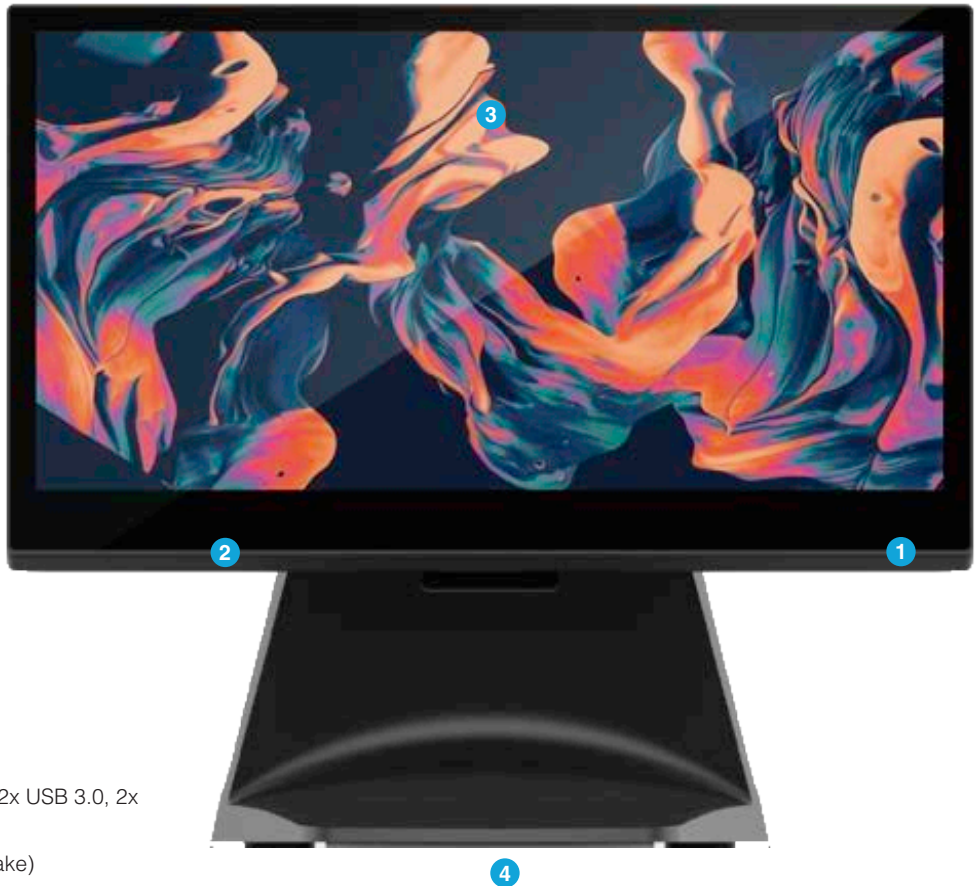
MSR USB: Encrypted Option Available
Fingerprint Reader: HID Global Fingerprint Reader, Steelcoat
Rear LCD: 11.6" and 15.6" with Touch
Customer Display: 2 x 20 LCM Display
Pinpad Mount- Supports various readers from Ingenico, IDtech, Verifone, Pax and Equinox
Scanner: 2D Honeywell Barcode Scanner
Wireless LAN: 802.11 b/g/n/ac/ax

MOUNTING

VESA Mount 100 x 100

OS SUPPORT

Windows 10 IOT, Windows 10 Pro, Windows 11 Pro, Linux



KEY FEATURES

1	Projected Capacitive Touch Screen
2	Multiple Port Options
3	15.6" Widescreen
4	Same reliability as the Pulse Ultra